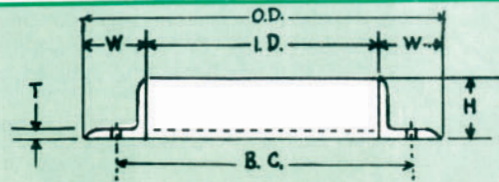


SPIRAL PIPE OF TEXAS, INC.

ANGLE RING SPECIFICATIONS



ALL STANDARD RINGS ARE PUNCHED

Order Size	Inside Diameter I.D.	Outside Diameter O.D.	Width W	Height H	Thickness T	Bolt Holes Centers B.C.	Hole Size	Number of Holes	Approx. Weight Lbs.		
3"	3 1/16"	5 1/16"	1"	7/8"	10 GA	4 5/16"	9/32"	6	.70	12 PIECES/BUNDLE	
4"	4 1/16"	6 1/16"	1"	15/16"	10 GA	5 5/16"	9/32"	6	.85		
5"	5 1/16"	7 1/16"	1"	1"	10 GA	6 5/16"	9/32"	6	1.18		
6"	6 3/32"	8 1/8"	1"	1"	10 GA	7 5/16"	9/32"	6	1.38		
7"	7 1/8"	9 1/8"	1"	1"	1/8"	8 7/16"	3/8"	6	1.73		
8"	8 1/8"	10 5/8"	1"	1"	1/8"	9 7/16"	3/8"	6	1.90		
9"	9 1/8"	11 5/8"	1 1/4"	1 1/4"	1/8"	10 5/8"	7/16"	6	2.55		
10"	10 1/8"	12 9/16"	1 1/4"	1 1/4"	1/8"	11 13/16"	7/16"	6	3.05		
11"	11 1/8"	13 9/16"	1 1/4"	1 1/4"	1/8"	12 3/4"	7/16"	6	3.25		
12"	12 1/8"	15 1/16"	1 1/2"	1 1/2"	1/8"	14"	7/16"	8	3.88		
13"	13 1/8"	16 1/16"	1 1/2"	1 1/2"	1/8"	15"	7/16"	8	4.25		24 PIECES/BUNDLE
14"	14 1/8"	17 1/16"	1 1/2"	1 1/2"	1/8"	16"	7/16"	8	4.75		
15"	15 1/8"	18 1/16"	1 1/2"	1 1/2"	3/16"	17"	7/16"	8	7.25		
16"	16 1/8"	19 3/16"	1 1/2"	1 1/2"	3/16"	18"	7/16"	8	8.00		
17"	17 1/8"	20 3/16"	1 1/2"	1 1/2"	3/16"	19"	7/16"	8	8.25		
18"	18 1/8"	22 3/16"	1 1/2"	1 1/2"	3/16"	20"	7/16"	8	8.50		
19"	19 1/8"	22 3/16"	1 1/2"	1 1/2"	3/16"	20 3/4"	7/16"	12	8.75		
20"	20 1/8"	23 3/16"	1 1/2"	1 1/2"	3/16"	21 3/4"	7/16"	12	9.50		
21"	21 1/8"	24 3/16"	1 1/2"	1 1/2"	3/16"	22 3/4"	7/16"	12	10.25		
22"	22 1/8"	25 3/16"	1 1/2"	1 1/2"	3/16"	23 3/4"	7/16"	12	10.75		
23"	23 1/8"	26 3/16"	1 1/2"	1 1/2"	3/16"	24 7/8"	7/16"	12	11.25		
24"	24 1/8"	27 3/16"	1 1/2"	1 1/2"	3/16"	25 7/8"	7/16"	12	11.50		
25"	25 1/8"	28 3/16"	1 1/2"	1 1/2"	3/16"	26 7/8"	7/16"	16	12.00		
26"	26 1/8"	30 1/8"	2"	2"	3/16"	28 3/8"	7/16"	16	16.75	12 PIECES/BUNDLE	
27"	27 1/8"	31 1/8"	2"	2"	3/16"	29 3/8"	7/16"	16	17.38		
28"	28 1/8"	32 1/8"	2"	2"	3/16"	30 3/8"	7/16"	16	18.00		
29"	29 1/8"	33 1/8"	2"	2"	3/16"	31 3/8"	7/16"	16	18.75		
30"	30 1/8"	34 1/8"	2"	2"	3/16"	32 3/8"	7/16"	16	19.50		
31"	31 1/8"	35 1/8"	2"	2"	3/16"	33 3/8"	7/16"	16	20.38		
32"	32 1/8"	36 1/8"	2"	2"	3/16"	34 3/8"	7/16"	16	20.75		
33"	33 1/8"	37 1/8"	2"	2"	3/16"	35 3/8"	7/16"	16	21.25		
34"	34 1/8"	38 1/8"	2"	2"	3/16"	36 3/8"	7/16"	16	22.00		
35"	35 1/8"	39 1/8"	2"	2"	3/16"	37 3/8"	7/16"	16	22.50		
36"	36 1/8"	40 1/8"	2"	2"	3/16"	38 3/8"	7/16"	16	23.00		
37"	37 1/8"	41 1/8"	2"	2"	3/16"	39 3/8"	7/16"	24	23.75		6 PIECES/BUNDLE
38"	38 1/8"	42 1/8"	2"	2"	3/16"	40 3/8"	7/16"	24	24.50		
39"	39 1/8"	43 1/8"	2"	2"	3/16"	41 3/8"	7/16"	24	25.00		
40"	40 1/8"	44 1/8"	2"	2"	3/16"	42 3/8"	7/16"	24	25.75		
41"	41 1/8"	45 1/8"	2"	2"	3/16"	43 3/8"	7/16"	24	26.13		
42"	42 1/8"	46 1/8"	2"	2"	3/16"	44 3/8"	7/16"	24	26.50		
43"	43 1/8"	47 1/8"	2"	2"	3/16"	45 3/8"	7/16"	24	27.38		
44"	44 1/8"	48 1/8"	2"	2"	3/16"	46 3/8"	7/16"	24	28.00		
45"	45 1/8"	49 1/8"	2"	2"	3/16"	47 3/8"	7/16"	24	28.63		
46"	46 1/8"	50 1/8"	2"	2"	3/16"	48 3/8"	7/16"	24	29.00		
47"	47 1/8"	51 1/8"	2"	2"	3/16"	49 3/8"	7/16"	24	29.88		
48"	48 1/8"	52 1/8"	2"	2"	3/16"	50 3/8"	7/16"	24	30.75		
49"	49 1/8"	53 1/8"	2"	2"	3/16"	51 3/8"	7/16"	24	31.50		
50"	50 1/8"	54 1/8"	2"	2"	3/16"	52 3/8"	7/16"	24	32.00		

INCLUDE WITH YOUR ORDER*:
 SIZE I.D.
 WITH OR WITHOUT HOLES

MINIMUM ORDER \$25.00
 ALL SHIPMENTS FOB FACTORY

*ANY DEVIATIONS FROM ABOVE STOCK LIST, CONSULT FACTORY